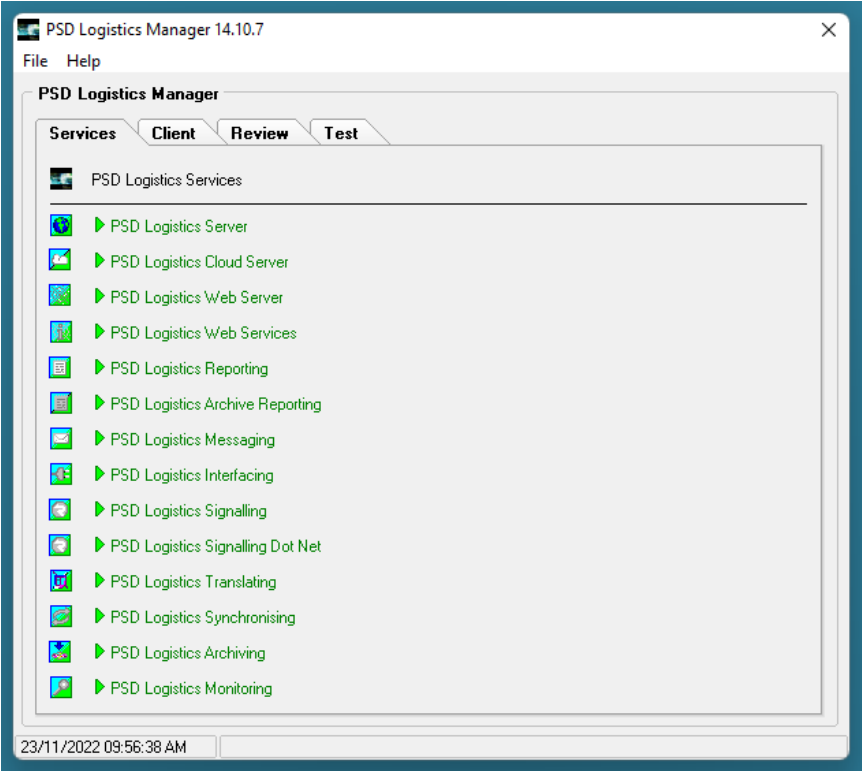


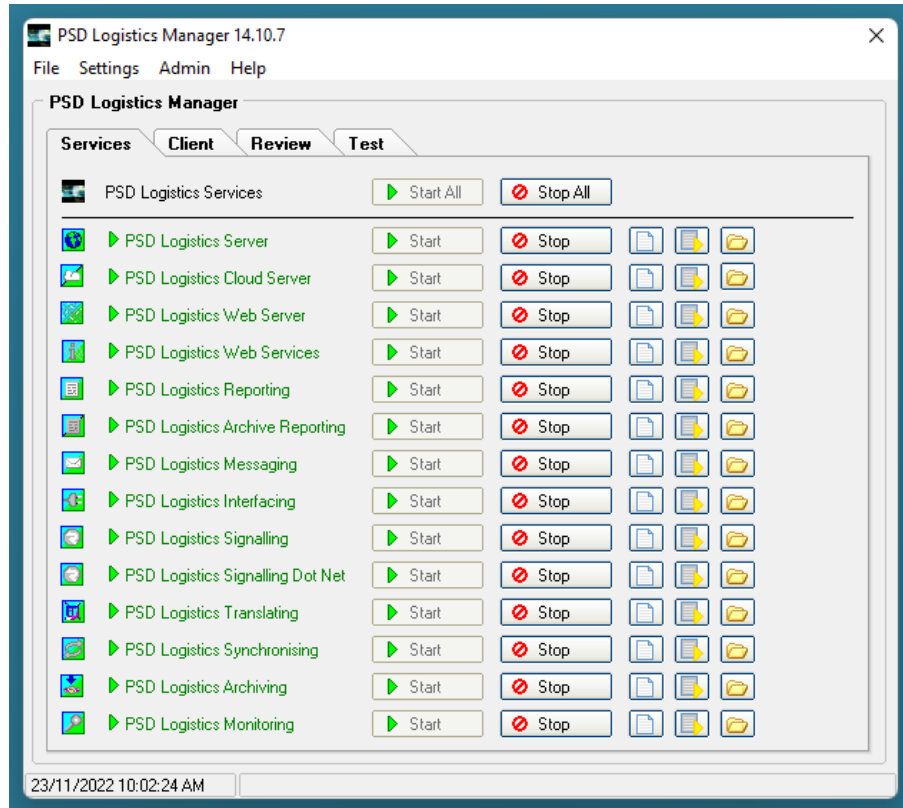
How To Install a New PSD Logistics Licence

Last Updated 20/12/2022

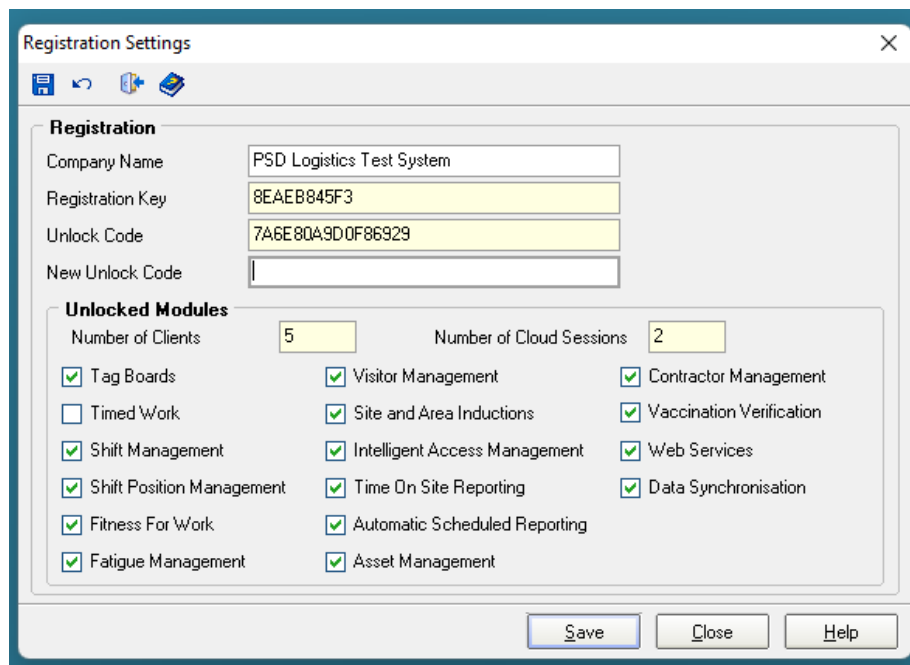
Solution

Step	Action
1	<p>Log into MS Windows on the server hosting the PSD Logistics Server services. Run PSDLogisticsManager.exe using "Run As Administrator". The default folder for this application is C:\Program Files (x86)\PSDLogistics\Manager\.</p>  <p>The screenshot shows the PSD Logistics Manager 14.10.7 application window. The title bar reads "PSD Logistics Manager 14.10.7". Below the title bar is a menu bar with "File" and "Help". The main area has four tabs: "Services", "Client", "Review", and "Test". The "Services" tab is selected, displaying a list of services under the heading "PSD Logistics Services". The services listed are: PSD Logistics Server, PSD Logistics Cloud Server, PSD Logistics Web Server, PSD Logistics Web Services, PSD Logistics Reporting, PSD Logistics Archive Reporting, PSD Logistics Messaging, PSD Logistics Interfacing, PSD Logistics Signalling, PSD Logistics Signalling Dot Net, PSD Logistics Translating, PSD Logistics Synchronising, PSD Logistics Archiving, and PSD Logistics Monitoring. Each service has a small icon to its left. The status bar at the bottom left shows the date and time: "23/11/2022 09:56:38 AM".</p>

2 Select "File" -> "Login" and log into the PSD Logistics Manager using the admin account. The default password is "admin". A number of menu items and features will be displayed.



3 Select "Settings" -> "Registration". This will display the Registration Settings window.



4 Enter the new unlock code as provided by PSD. The registered options will be displayed.

5 Select "Save" and "Close".